

# SOLUTIONS

Office Live Tips & Solutions

## Using Third Party Software

Solutions for Office Live <http://solutionsforofficelive.com>.

With Office Live, you can use your own software to create and upload your own site. If you decide you want to use third party software, you will not be able to use the backend of your website (Business Applications) to display data on your site. You will also lose anything you created using the site designer.

1. In the Page Manager, go to Site Actions, and click Activate Advanced Design features.

2. Click OK in the dialog box that appears.

3. Go back to Site Actions again and this time, a new option will appear allowing you Activate third-party Design Tools

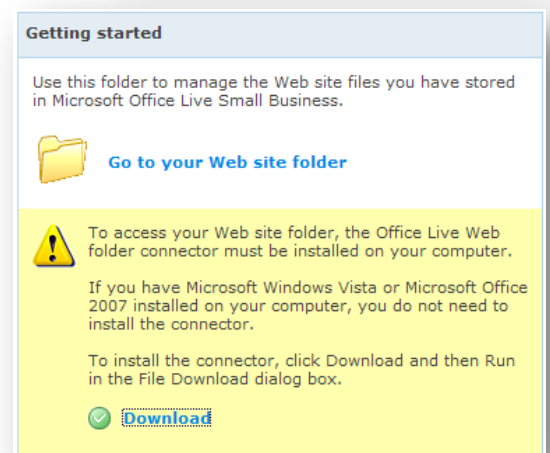
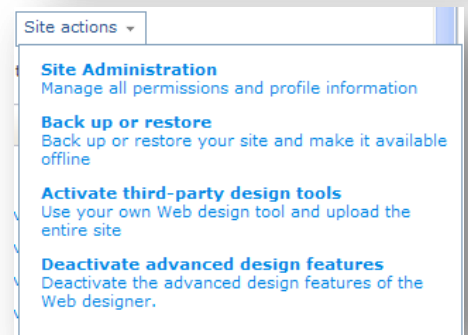
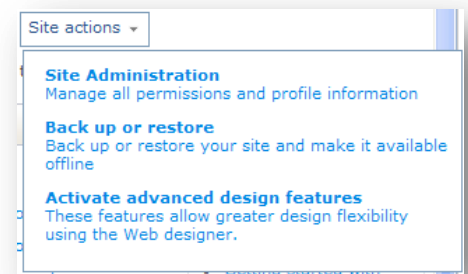
4. Click Activate now, like the message indicates, you will lose anything you have done in the Site Designer.

5. In the dialog that appears, check I want to deactivate the Office Live Small Business Web Designer, and click OK.

6. Next, click Download to download the Office Live web folder connector, if you have Windows Vista you may also need to download some additional updates, which can be found here: <http://office.microsoft.com/en-us/officelive/FX102659611033.aspx>.

7. Select Run in the file download box, and follow the instructions for installing the connector.

8. Once it is downloaded and installed, click Go to Your Website Folder, if it doesn't work, go to step 8a. below.



8a. In Windows go to Start, Control Panel, and User Accounts, select change an account and select your account from the list. Select Change my .NET Passport or Setup a .NET Passport. Setup the .NET passport, the same as the ID that you use the login to Office Live with, if you don't, you will not be able to open the web folder because the passports are incorrect.

8b. Go back to Office Live, and now select Go to Your Website Folder.

9. Once the folder is open, you can drag and drop files into the folder.

10. Delete out the current default.aspx file that is currently there, but don't delete or modify the Shared folder.

11. You can drag and drop multiple files and folders at once, but it may take some time.

12. In order for your website to work you need to have your "home" file named default.htm or default.aspx if you are using .aspx. This is the file your site will automatically redirect when someone enters your site. This cannot be changed.

